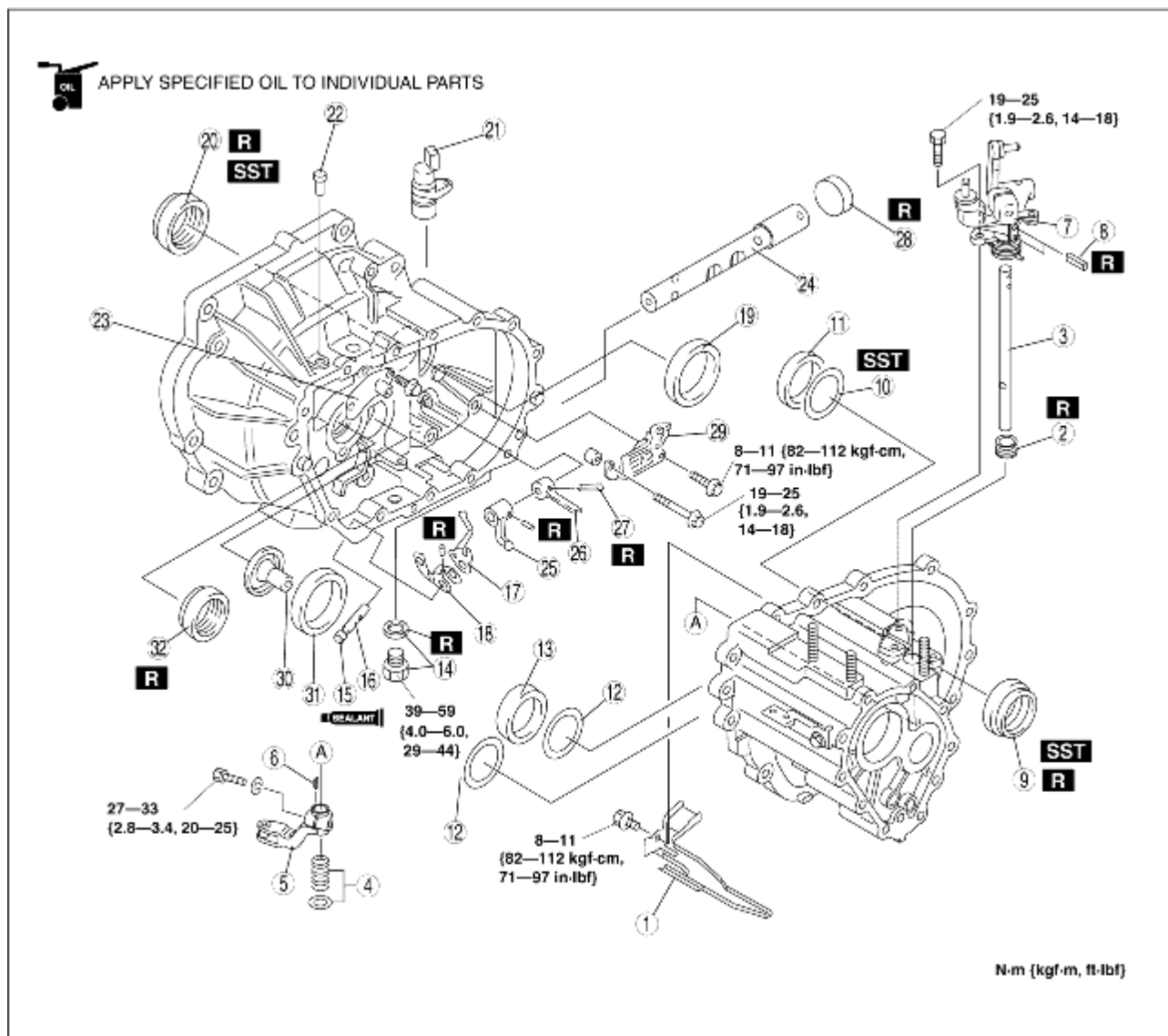


CLUTCH HOUSING AND TRANSAXLE CASE COMPONENTS ASSEMBLY

B3E051517010102

1. Assemble in the order indicated in the table.



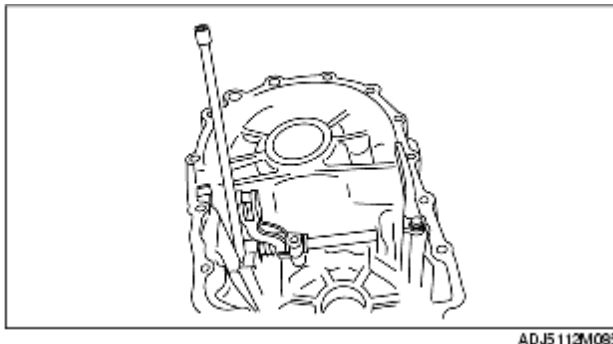
ADA5112M091

1	Oil passage
2	Oil seal
3	Shift lever shaft
4	Spring and washer
5	Control end (See Control End Assembly Note.)
6	Key
7	Shift lever assembly
8	Roll pin

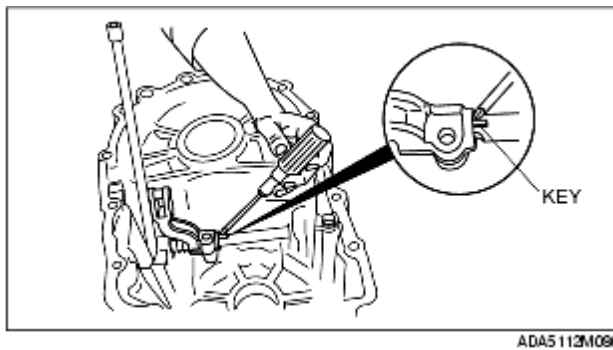
9	Oil seal (differential) (See Oil Seal (Differential) Assembly Note.)
10	Adjustment shim (See Bearing Preload Adjustment Note.) (See Bearing Race (Differential) Assembly Note.)
11	Bearing race (differential) (See Bearing Race (Differential) Assembly Note.)
12	Adjustment shim (See Bearing Preload Adjustment Note.)
13	Bearing race (secondary shaft) (See Bearing Race (Secondary shaft gear) Assembly Note.)
14	Drain plug and washer
15	Blind plug
16	Inner shift lever
17	Reverse lever
18	Lever set spring
19	Bearing race (differential) (See Bearing Race (Differential) Assembly Note.)
20	Oil seal (differential) (See Oil Seal (Differential) Assembly Note.)
21	Vehicle speed sensor
22	Breather
23	Breather cover component
24	Control rod
25	Change arm
26	Selector
27	Roll pin
28	Sealing cap
29	Guide plate component
30	Funnel
31	Bearing race (secondary shaft) (See Bearing Race (Secondary shaft gear) Assembly Note.)
32	Oil seal (primary shaft) (See Oil Seal (Primary Shaft) Assembly Note.)

Control End Assembly Note

1. Use an appropriate size pipe and fix the movement of the shift lever shaft, as shown in the figure.

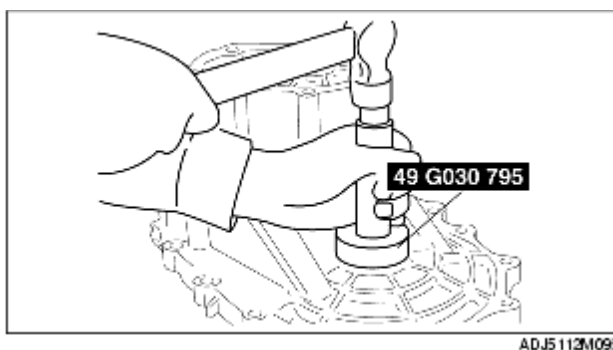


2. Using a flathead screwdriver, assemble the shift lever shaft key into the key slot.



Oil Seal (Differential) Assembly Note

1. Apply transaxle oil to the new oil seal lip.
2. Install the oil seal using the **SST**.

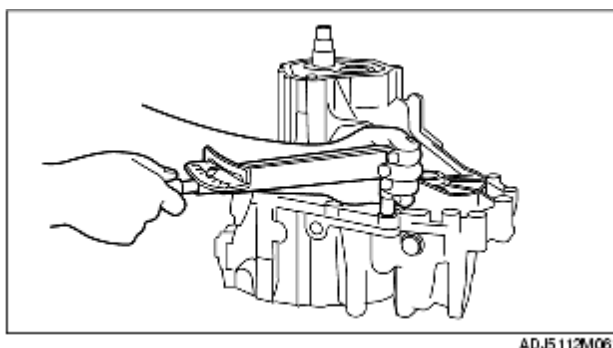


Bearing Preload Adjustment Note

Adjust the bearing preload and select the shim(s) as follows.

Primary shaft assembly

1. Set the primary shaft assembly into the clutch housing.
2. Install the transaxle case to the clutch housing and tighten the bolts to the specified torque.



Tightening torque
19-25 N·m {1.9-2.6 kgf·m, 14 -18 ft·lbf}

3. Mount a dial indicator to the transaxle hanger and measure the primary shaft thrust clearance.

Thrust clearance**0.005-0.100 mm {0.0002-0.0039 in}**

4. Select the closest shim on the thin side from the table.

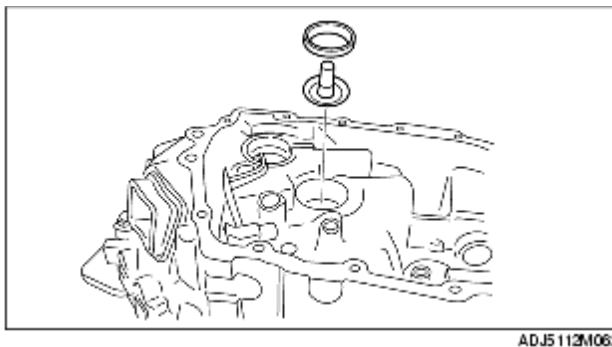
Thickness of shim

mm {in}

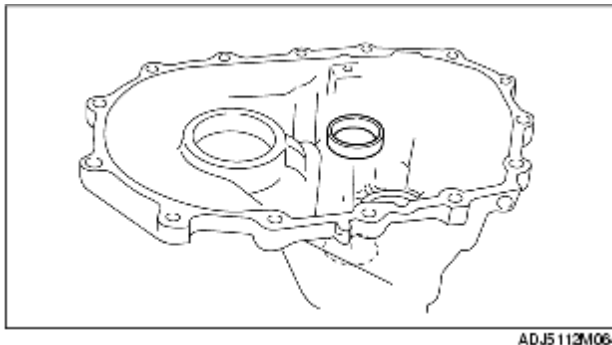
0.10 {0.004}	0.20 {0.008}	0.30 {0.012}	0.40 {0.016}
0.50 {0.020}	0.60 {0.024}	-	-

Secondary shaft bearing preload

1. Install the funnel and bearing race into the clutch housing.



2. Set the secondary shaft into the clutch housing.
3. Install the secondary shaft bearing race into the transaxle case.



4. Install the transaxle case to the clutch housing and tighten the bolts to the specified torque.

Tightening torque**19-25 N·m {1.9-2.6 kgf·m, 14 -18 ft·lbf}**

5. Mount a dial indicator to the transaxle case and measure the secondary shaft end play.

6. Select the shim as follows.

(a) Add 0.03 mm {0.0012 in} to the thrust clearance.

(b) Add 0.08 mm {0.0031 in} to the thrust clearance.

(c) Select the thickest adjustment shim in the range

from (a) to (b) from the table.

Example: 0.22 mm {0.009 in}

0.22 mm {0.009 in} + 0.03 mm {0.001 in}

= 0.25 mm {0.010 in}

0.22 mm {0.009 in} + 0.08 mm {0.003 in}

= 0.30 mm {0.012 in}

Range: 0.25 mm {0.010 in}-0.30 mm {0.012 in}

Select the 0.30 mm {0.012 in} adjustment shim.

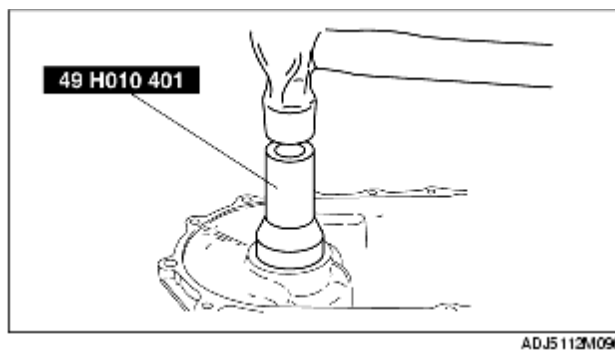
Thickness of shim

mm {in}

0.15 {0.006}	0.20 {0.008}	0.25 {0.010}	0.30 {0.012}
0.35 {0.014}	0.40 {0.016}	0.45 {0.018}	0.50 {0.020}
0.55 {0.022}	0.60 {0.024}	0.65 {0.026}	0.70 {0.028}

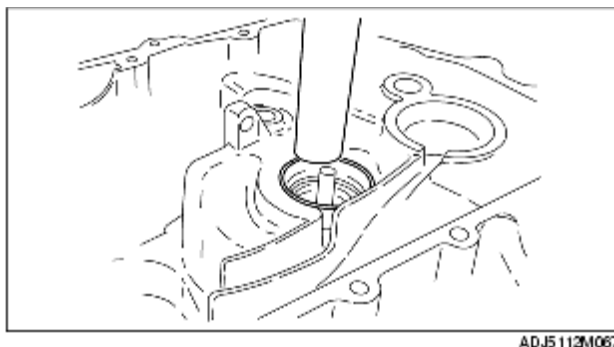
Bearing Race (Differential) Assembly Note

1. Install the adjustment shim (s) and install the bearing race using the **SST**.



Bearing Race (Secondary shaft gear) Assembly Note

1. Install the adjustment shim (s) and install the bearing race using a suitable pipe.



Oil Seal (Primary Shaft) Assembly Note

1. Apply transaxle oil to outer circumference of the oil seal.
2. Install the new oil seal using a suitable pipe.

